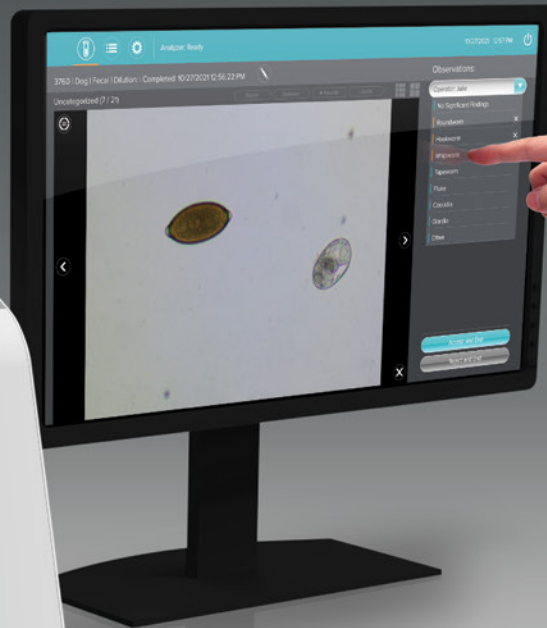
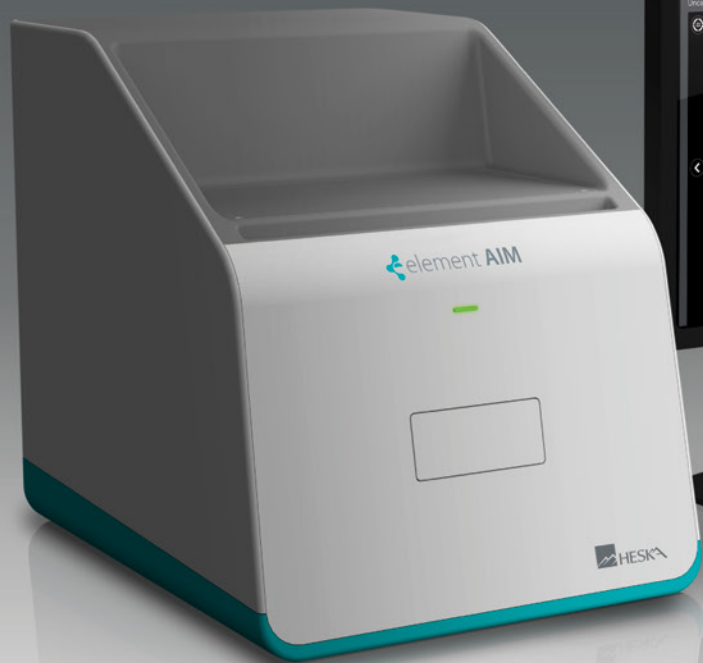


NEW



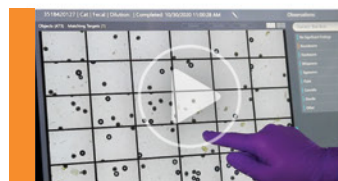
# element AIM

Automated Artificial Intelligence Microscopy

The world's ONLY fully automated Fecal and Urine Point-of-Care Lab. The number one 2-in-1 solution to analyze #1 and #2... in minutes.

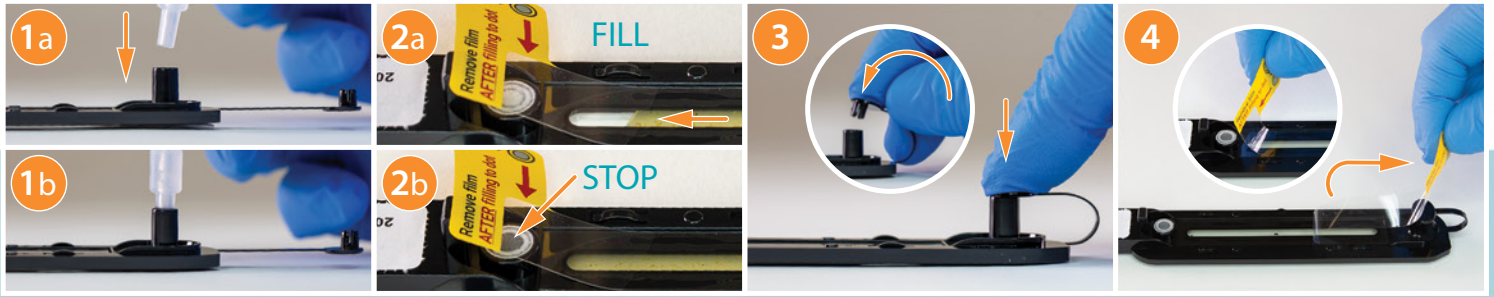
Heska® invented the Element AIM® to automate urine sediment and fecal flotation with state of the art optics and ground breaking artificial intelligence for confident diagnosis in minutes. Element AIM finds important cells, bacteria, crystals, and parasites, including roundworm, hookworm, tapeworm, whipworm, giardia, and more. No more fussing with slides and coverslips! Sealed test cartridges eliminate mess and reduce zoonotic exposure. Get results before sample quality degrades and before the patient leaves the office.

- Sanitary, closed system - maintenance free
- Superior lab quality optics and images
- A.I. reduces errors and wasted time
- Results in minutes
- Gold Standard visual-based diagnosis
- Larger sample size = much higher success



Point your smart phone camera at the QR code to visit the online Element AIM demo video.

# element AIM Proprietary Sealed Cartridge System



1a Insert Syringe or Fecal Prep Kit

1b Fill until filter dot is fully gray

3 Seal fill port with built-in cap

4 Remove protective window film

## A Unique Closed System

...with zero cleanup or maintenance.

- The exclusive sealed **Element AIM Cartridge System** delivers a simple and sanitary process.
- Urine samples are transferred directly from the syringe into the cartridge, preventing unnecessary spills.
- **Larger sample size**, combined with the large scan area, equals much greater success with hard to find objects.
- Centrifuged fecal samples are transferred directly into the cartridge, using our unique **AIM Fecal Prep Kit** and transfer device.



Point your smart phone camera at the QR code to visit the online fecal preparation demo video.

## What our customers are saying:

“Heska’s Element AIM has been an exceptional addition to our in-clinic lab setting. Urinalysis results are more reliable than with our previous machine, giving us confidence. In comparison to other veterinary lab instruments, Heska’s solutions produce reliable and accurate results in the shortest amount of time. They are the most cost effective for us and our clients.”

**Shara Carlton, DVM, Chief of Medicine**  
**Tristan Young, COO**  
**OKC Vet Campus**

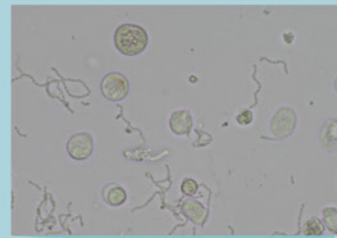
“Element AIM brings the technology our industry currently needs. Even amid staff shortages, AIM enables us to handle an increased patient volume, while providing the highest standard of care. In our 24-hour practice, the Element AIM, along with our current Heska lab solutions, aids our staff with exceptional patient performance. We are increasing our ability to provide top-quality patient care in an efficient and timely manner. Our AIM is utilized for every applicable wellness, ailment and emergency case. The A.I. diagnosis and image quality exceeds our expectations; being just as crisp as a well-tuned microscope. This analyzer is an absolute asset to our practice.”

**Carlo Riolo, DVM, CEO**  
**PAW Health Network, Inc.**

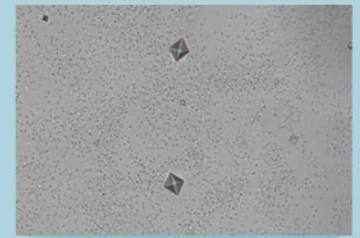


## Get Answers in Minutes

...curated by the AIM Artificial Intelligence system.



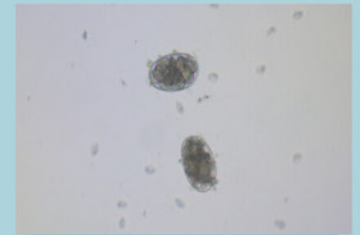
Urine sample with cocci, nonsquamous epithelial and white blood cells.



Urine sample with calcium oxalate dihydrate crystals.



Fecal sample with roundworm eggs and larva.



Fecal sample with hookworm eggs and giardia cysts.

## Reference Glossary

Comprehensive image database to aid your diagnosis

